
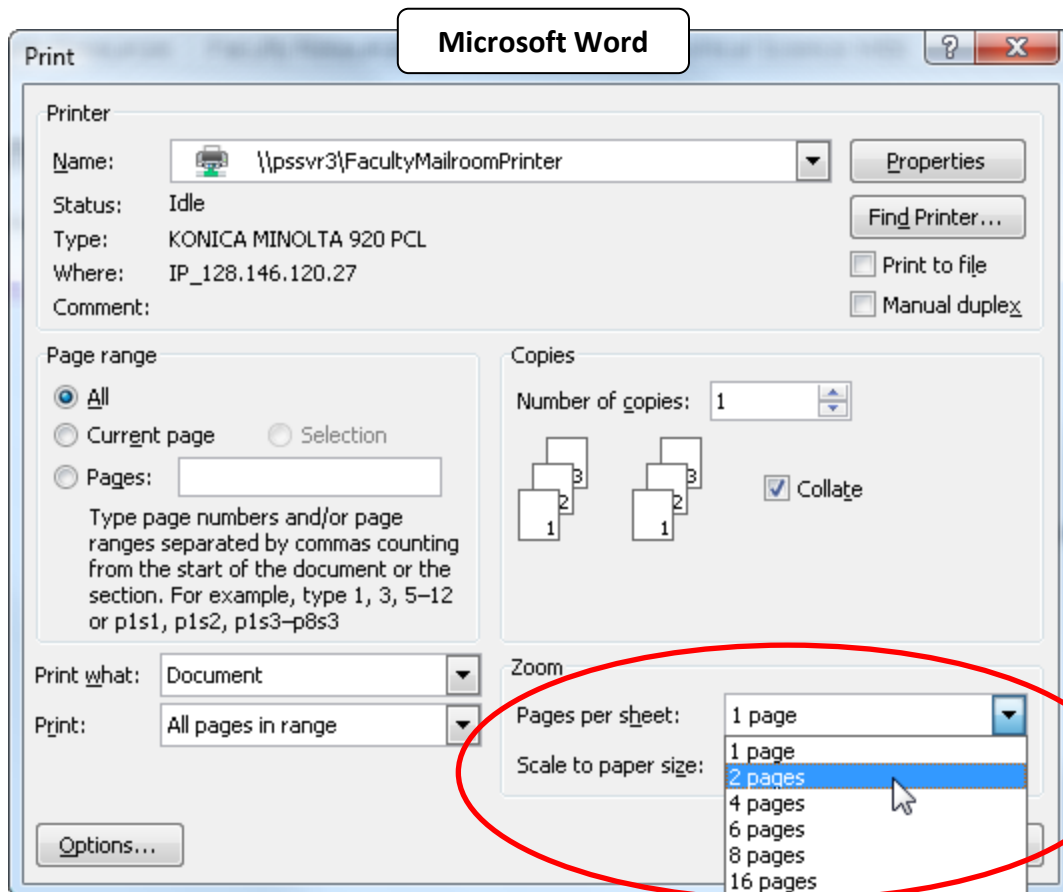
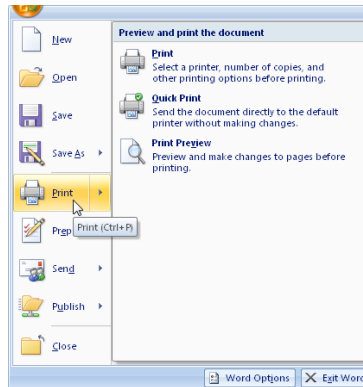
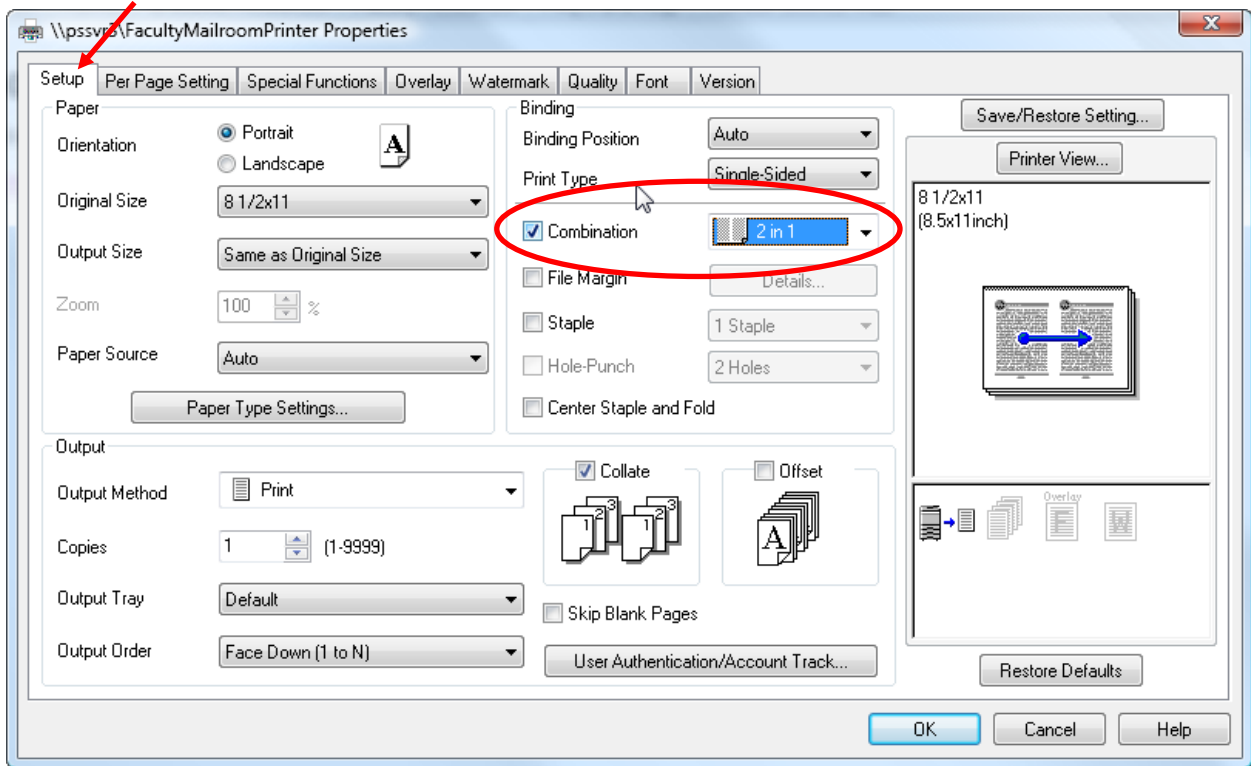
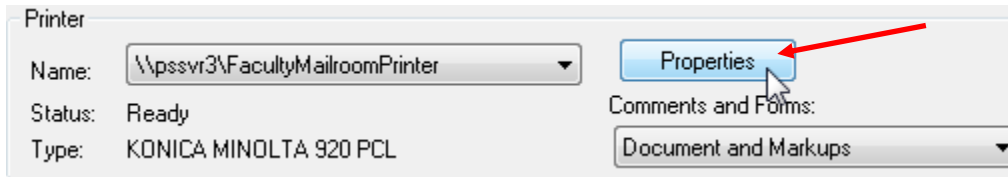


## Konica printing function: Printing 2 pages in one sheet

If you are using *Microsoft Word 2007*, click  at the left upper corner and then *Print* to open the *Print dialog box*. Under the *Zoom* section in the *Print dialog box*, select the number of pages you want to print in one sheet. *Microsoft Word 2007* will automatically scale all pages according to your selection.



Another way to accomplish this is to open Konica printer *Properties dialog box*. Under the *Setup* tab, check the *Combination* checkbox and select the number of pages you want to print in one sheet. Konica printer will automatically scale all pages according to your selection.



If you want to print 2 pages of 8-1/2 x 11 into one 11 x 17 sheet without reducing to original printing size, it can be accomplished by going to the *Special Functions* tab in the *Konica Properties dialog box*. Check *Combination(No Reduction)* and select *2 in 1*. Konica printer will automatically select 11 x 17 paper in the printer tray if it is available.

